

COIN CELL DISC CUTTING MACHINE

Precision Cutting for Research
Reliable Results Every Time

KEY FEATURES

- High precision cutting for coin cell electrodes
- Compact and robust design
- Easy operation with manual control
- Suitable for various electrode materials
- Durable stainless steel construction
- Ideal for R&D and quality control labs

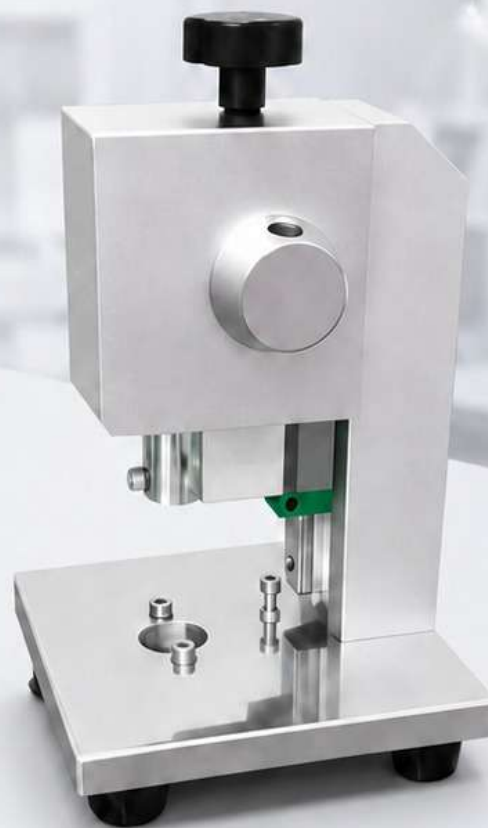
APPLICATIONS

- Coin cell electrode sample preparation
- R&D in battery material development
- Quality control and testing labs
- Universities and research institutes

TECHNICAL SPECIFICATIONS

PARAMETER	SPECIFICATION
Model	CCDCM-01
Cutting Type	Disc Cutting
Sample Type	Coin Cell Electrode
Disc Diameter	Ø 12 mm, Ø 14 mm, Ø 16 mm (Selectable)
Cutting Thickness	Up to 2 mm (Adjustable)
Cutting Accuracy	±0.05 mm
Operation	Manual
Blade Material	SKD11 / High Speed Steel
Body Material	Aluminum Alloy / Stainless Steel
Dimensions (L x W x H)	200 x 150 x 280 mm (Approx.)
Net Weight	4.5 kg (Approx.)
Application	Coin Cell Electrode Disc Cutting
Warranty	12 Months

*Specifications are subject to change without prior notice.



HIGH PRECISION



EASY OPERATION



DURABLE BUILD



LAB READY

PRECISION & PERFORMANCE



Precise disc cutting with minimal burr



Compatible with multiple disc diameters



Ergonomic design for smooth operation

COMMON SPECIFICATIONS

- Stable table top design
- Low maintenance
- Long service life
- User-friendly operation
- Compact and light weight
- Suitable for lab environment
- Corrosion resistant finish
- Replacement blades available
- Custom disc sizes available on request